

PART OF THE N.1/2, OF SECTION 1, T.7N., R.1E., S.L.B. &amp; M.

## POWDER 11 AT POWDER MOUNTAIN

IN WEBER COUNTY

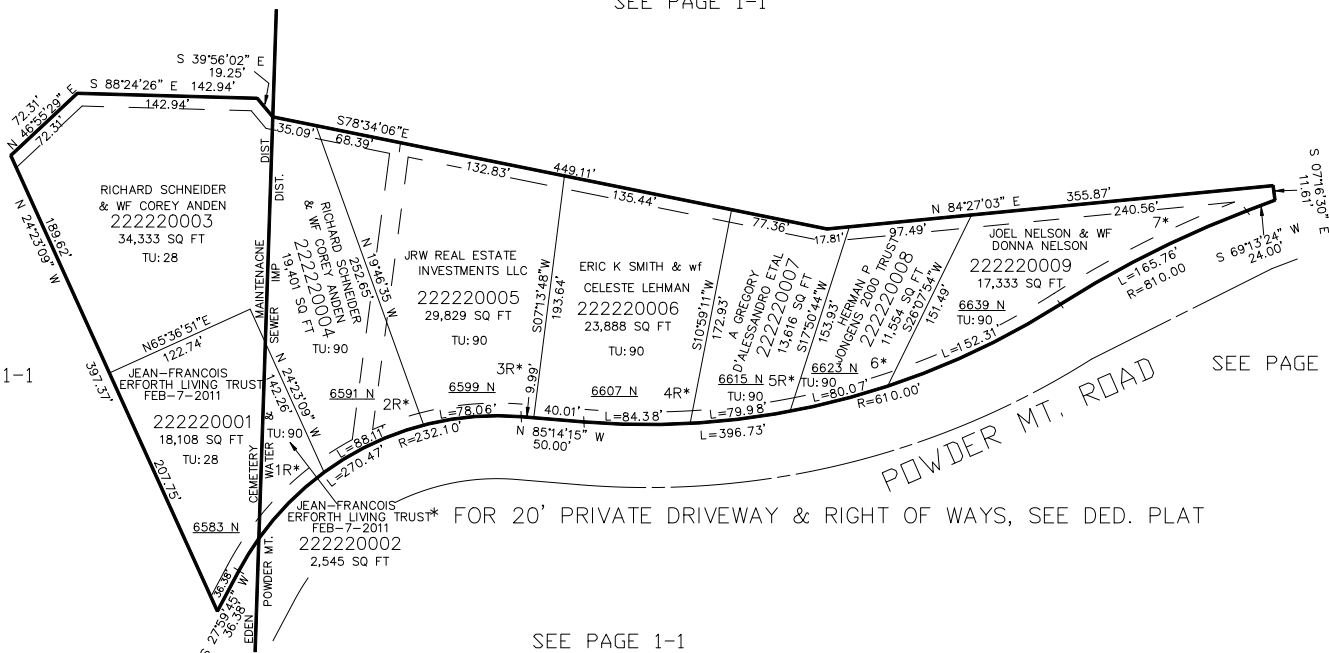
TAXING UNIT: 28, 90

SCALE 1" = 80'

SEE PAGE 1-1

SEE PAGE 1-1

SEE PAGE 1-1



SEE PAGE 1-1

10' UTILITY & DRAINAGE EASEMENTS EACH  
SIDE OF PROPERTY LINES AS INDICATED  
BY DASHED LINES EXCEPT AS OTHERWISE  
SHOWN.

FOR COMPLETE ENG DATA SEE  
ORIGINAL DEDICATION PLAT IN  
BOOK 60, PAGE 97 OF RECORDS.